

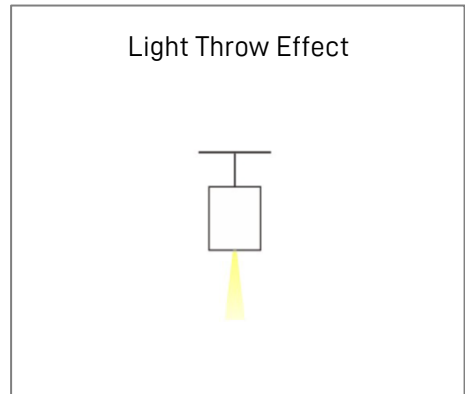
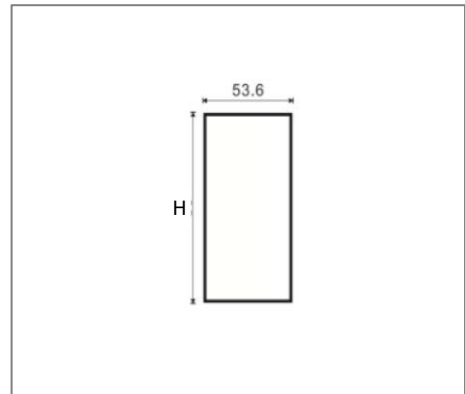
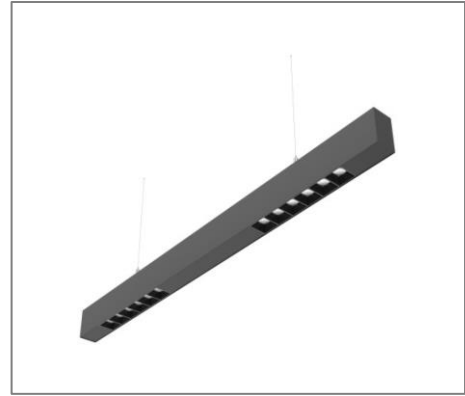
G50-LS5380-B SERIES

Application

Suspended Linear Light is designed to use for office buildings, shopping centers, convenience stores, modern trade stores, discount stores, hotels, restaurants, residences, recreation centers, museums, etc.

Specification

Input Voltage	200-240 V AC
IP Rating	IP20
Rendering Index	> 90
Lumen Per Watt	120lm/w
LED Operating Life	>50, 000 Hrs
Colour Correlated Temperature	3000K, 4000K, 6500K
Available Colour	White/Black/Grey
Beam Angle	15° / 30° / 45°
Dimmable	Optional
Mounting Method	Suspended Mounted



Ordering Data

Part No.	Power	Length (L x W x H)
EVO-G50-LS5380-B	36W	1145mm x 53.6mm x 80mm

Accessories

