

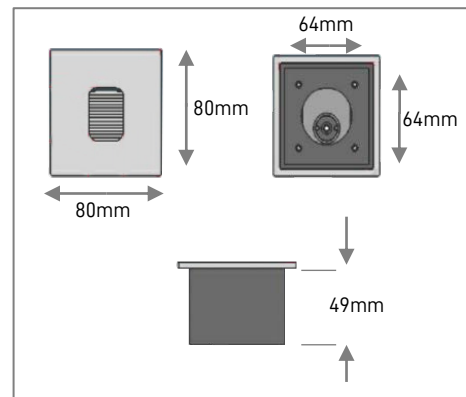
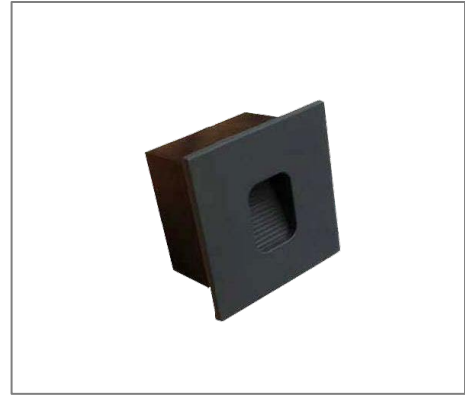
G189 SERIES

Application

Wall recessed luminaire is designed to use for outdoor applications such as walkways, wall illumination, safety applications, etc..

Specification

Input Voltage	200-240 V AC
Power Factor	0.9 Typical
System Efficiency	95%
Rendering Index	Min 90
Operating Temperature	-20 to 50 Degrees Celsius
LED Operating Life	30,000 Hrs
Dimmable	Optional
Material	Aluminium body PVC mounting box
IP Rating	IP54



Ordering Data

Part No.	Power	Lumens	CCT (K)	Beam Angle
EVO#G189-WL	3W	240lm	3000K	100°